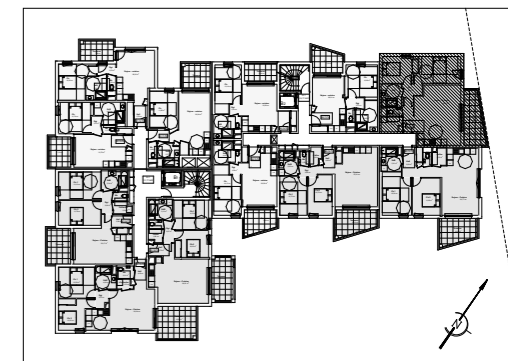


NEO RESIDENCE PRIVEE
251 Avenue Augustin Fresnel - 13100 Aix-en-Provence



Appartement de 3 pièces
n°B2-12 au R+1

Sejour - Cuisine	28,66
Ch.1	13,20
Ch.2	9,88
SdB	5,20
Hall	4,05
Dgt	3,88
Cellier/bu.	3,13
Wc	1,35

SURFACE TOTALE HABITABLE **69,35 m²**

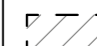
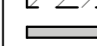
Terrasse 11,22

SURFACE TOTALE PRIVATIVE **80,57 m²**

LEGENDE

EMPLACEMENTS ELEMENTS DE CUISINE

LL	LAVE LINGE	CUI	BLOC CUISSON
LV	LAVE VAISSELLE	F	REFRIGERATEUR
AV	ALLEGE VITREE	TE	TABLEAU ELECTRIQUE (GAINE TECHN. LOGEMENT)
VR	VOLET ROULANT		
GC	GARDE-CORPS		

 FAUX-PLAFOND, SOFFITE
 CLOISON DEMONTABLE

Hauteur sous plafond des pièces principales sauf mention particulière : 2.50 m

Echelle	0 0,50 1	Date	25/02/2020	Indice : A
---------	----------	------	------------	------------