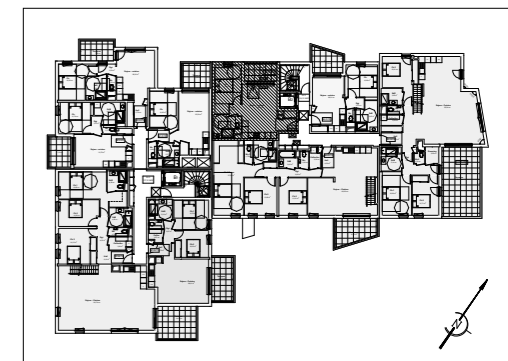


NEO RESIDENCE PRIVEE
251 Avenue Augustin Fresnel - 13100 Aix-en-Provence



Appartement de 2 pièces
n°B2-34 au R+3

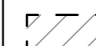
Hall	3,97
Sejour - cuisine	21,18
Ch.	13,15
SdB	6,19
Dgt	1,58
SURFACE TOTALE HABITABLE	46,07 m²
Terrasse	6,68
SURFACE TOTALE PRIVATIVE	53,31 m²


LEGENDE

EMPLACEMENTS ELEMENTS DE CUISINE

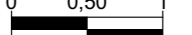
LL	LAVE LINGE	CUI	BLOC CUISSON
LV	LAVE VAISSELLE	F	REFRIGERATEUR

AV	ALLEGE VITREE	TE	TABEAU ELECTRIQUE (GAINE TECHN. LOGEMENT)
VR	VOLET ROULANT		
GC	GARDE-CORPS		

 FAUX-PLAFOND, SOFFITE

 CLOISON DEMONTABLE

Hauteur sous plafond des pièces principales sauf mention particulière : 2.50 m

Echelle		Date	25/02/2020	Indice : A
---------	---------------------------------------------------------------------------------------	------	------------	------------